

Fund objective

The Solidum Cat Bond Fund is an open-end fund registered in Liechtenstein as a UCITS pursuant to Liechtenstein law in the legal form of a trust (UCITS V). The Fund's objective is to achieve long term capital appreciation and low correlation to fixed income, equity and non-traditional investments. The Fund holds a diversified portfolio of catastrophe bonds or notes and other instruments transferring insurance event risk or genuine insurance underwriting risk. As the insurance event linked securities market evolves, new products may become available and the Fund may also invest in such products. The portfolio is actively managed in an attempt to achieve optimal returns in the context of the prevailing market environment.

In addition to its functional currency USD, the Fund offers CHF and EUR share classes. The equity capital of the CHF and EUR share classes is hedged to reduce effects of FX effects.

Key information

Fund name:		Share classes		
Strategy	Solidum Cat Bond Fund	USD	Bloomberg	SOLCATU LE <Equity>
Focus	Insurance linked securities	ISIN	Reuters	L00049587293
Subscription	Catastrophe bonds	Telekurs	Telekurs	4958729X.CHE
Redemption	Semi-monthly	Share class inception	Current NAV USD class	4.958.729
Redemption notice	10 days	Share class inception	Current NAV USD class	Sept 30, 2009
Lockup	none	Current NAV USD class		1'862.86
Leverage	none	CHF	Bloomberg	SOLCATC LE <Equity>
Domicile	Liechtenstein	ISIN	Reuters	L00049587277
Fund type	UCITS V	Telekurs	Telekurs	4958727X.CHE
Public distribution	AT, CH, DE, FI, LI	Share class inception	Current NAV CHF class	4.958.727
Management company	Independent Fund Management AG	Share class inception	Current NAV CHF class	Sept 30, 2009
Asset manager	Solidum Partners AG	Current NAV CHF class		1'413.11
Depository	Liechtensteinische Landesbank AG	EUR	Bloomberg	SOLCATE LE <Equity>
Auditor	Ernst & Young	ISIN	Reuters	L00049587301
Reporting	Monthly	Telekurs	Telekurs	4958730X.CHE
Financial year-end	December 31	Share class inception	Current NAV EUR class	4.958.730
Distribution	Accumulating	Current NAV EUR class		Sept 30, 2009
Fund inception	Sept 30, 2009			1'566.39
Minimum investment	10 shares			
Management fee	1.00%			
Performance fee	none			

Historical performance

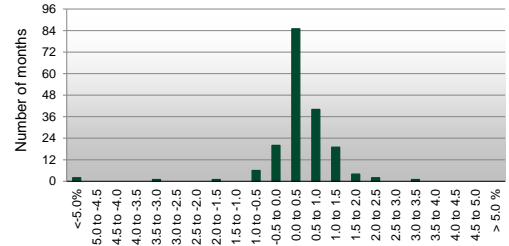
	Year	Jan	Feb	Mar	Apr	May	Jun	Jul	Aug	Sep	Oct	Nov	Dec	Year
Solidum Cat Bond Fund, USD - R class	<b>2024</b>	1.33%	1.30%	0.99%	0.33%	-0.19%	0.90%	1.27%	1.84%	2.08%	0.56%			<b>10.88%</b>
	<b>2023</b>	1.29%	1.23%	1.31%	1.15%	0.92%	1.52%	0.90%	1.39%	1.19%	1.19%	0.90%	1.01%	<b>14.94%</b>
	<b>2022</b>	0.29%	-0.09%	-0.11%	-0.28%	0.00%	-0.40%	0.22%	-0.03%	-5.99%	0.38%	1.29%	0.78%	<b>-4.07%</b>
	<b>2021</b>	0.50%	-0.86%	1.40%	0.61%	0.53%	0.66%	0.40%	-0.21%	0.13%	0.81%	0.61%	0.25%	<b>4.91%</b>
	<b>2020</b>	1.01%	-0.83%	-1.78%	0.44%	0.31%	0.89%	0.91%	1.13%	1.46%	0.66%	0.31%	0.42%	<b>5.02%</b>
	<b>2019</b>	0.70%	0.21%	-0.48%	0.22%	-0.56%	0.23%	0.32%	-0.56%	3.11%	1.32%	-0.11%	0.64%	<b>5.10%</b>
	<b>2018</b>	1.55%	0.30%	0.21%	0.44%	0.44%	0.85%	0.48%	0.70%	0.18%	-0.43%	-0.74%	0.07%	<b>4.13%</b>
	<b>2017</b>	0.43%	0.18%	0.17%	-0.08%	0.34%	0.39%	0.41%	0.42%	-7.44%	0.55%	0.71%	2.45%	<b>-1.78%</b>
	<b>2016</b>	-0.08%	1.25%	0.37%	0.30%	0.23%	0.29%	0.27%	0.52%	0.67%	0.41%	0.21%	0.19%	<b>4.72%</b>
	<b>2015</b>	0.19%	0.03%	0.03%	0.08%	-0.08%	-0.07%	0.15%	0.37%	0.55%	-0.82%	0.10%	0.21%	<b>0.72%</b>
	<b>2014</b>	0.22%	0.18%	0.19%	0.11%	-0.15%	0.06%	0.16%	0.41%	0.22%	0.39%	0.00%	0.37%	<b>2.17%</b>
	<b>2013</b>	0.50%	0.58%	0.56%	0.35%	0.15%	-0.02%	0.14%	0.63%	0.71%	0.47%	0.26%	0.21%	<b>4.64%</b>
	<b>2012</b>	0.22%	-0.25%	0.13%	0.11%	0.42%	0.78%	0.20%	0.60%	0.80%	-0.17%	0.29%	0.69%	<b>3.90%</b>
	<b>2011</b>	0.51%	0.13%	-3.39%	0.19%	0.33%	0.49%	0.44%	0.24%	0.35%	0.74%	0.41%	0.19%	<b>5.57%</b>
<b>2010</b>	0.75%	1.28%	0.43%	0.33%	0.96%	-0.01%	0.42%	0.44%	1.52%	0.70%	0.17%	0.45%	<b>7.69%</b>	
<b>2009</b>										0.43%	0.55%	0.40%	<b>1.39%</b>	
Solidum Cat Bond Fund, CHF - R class	<b>2024</b>	1.04%	1.01%	0.68%	-0.01%	-0.57%	0.60%	0.84%	1.39%	1.68%	0.22%			<b>7.08%</b>
	<b>2023</b>	0.93%	0.95%	0.94%	0.81%	0.62%	1.09%	0.61%	1.01%	0.93%	0.88%	0.49%	0.58%	<b>10.29%</b>
	<b>2022</b>	0.29%	-0.11%	-0.27%	-0.40%	-0.13%	-0.28%	0.01%	-0.24%	-6.40%	0.11%	0.94%	0.16%	<b>-6.33%</b>
	<b>2021</b>	0.42%	-0.96%	1.38%	0.52%	0.41%	0.59%	0.30%	-0.29%	0.03%	0.79%	0.54%	0.08%	<b>3.85%</b>
	<b>2020</b>	0.78%	-1.00%	-2.12%	0.17%	1.23%	0.78%	0.74%	1.00%	1.36%	0.53%	0.17%	0.23%	<b>3.90%</b>
	<b>2019</b>	0.39%	-0.07%	-0.77%	-0.04%	-0.89%	-0.04%	0.01%	-0.84%	2.82%	0.91%	-0.31%	0.30%	<b>1.42%</b>
	<b>2018</b>	1.35%	0.16%	-0.08%	0.25%	0.20%	0.57%	0.21%	0.41%	-0.05%	-0.69%	-1.04%	-0.28%	<b>0.97%</b>
	<b>2017</b>	0.16%	0.04%	-0.05%	-0.23%	0.14%	0.13%	0.22%	0.21%	-7.59%	0.31%	0.54%	2.06%	<b>-4.30%</b>
	<b>2016</b>	-0.22%	1.18%	0.12%	0.16%	0.11%	0.15%	0.11%	0.41%	0.48%	0.21%	0.07%	-0.03%	<b>2.77%</b>
	<b>2015</b>	0.43%	-0.13%	-0.15%	-0.09%	-0.21%	-0.25%	-0.07%	0.28%	0.46%	-1.00%	-0.01%	-0.06%	<b>-0.82%</b>
	<b>2014</b>	0.22%	0.12%	0.14%	0.06%	-0.17%	-0.03%	0.14%	0.44%	0.20%	0.37%	-0.01%	0.43%	<b>1.93%</b>
	<b>2013</b>	0.34%	0.57%	0.57%	0.29%	0.12%	-0.07%	0.07%	0.58%	0.71%	0.43%	0.22%	0.13%	<b>4.03%</b>
	<b>2012</b>	0.17%	-0.31%	0.09%	0.04%	0.44%	0.68%	0.10%	0.50%	0.76%	-0.24%	0.12%	0.76%	<b>3.16%</b>
	<b>2011</b>	0.46%	0.10%	-3.34%	0.16%	0.32%	0.47%	0.40%	-0.02%	0.29%	0.67%	0.31%	0.15%	<b>-0.09%</b>
<b>2010</b>	0.77%	1.26%	0.39%	0.35%	1.03%	-0.15%	0.31%	0.40%	1.42%	0.63%	0.16%	0.39%	<b>7.18%</b>	
<b>2009</b>										0.38%	0.41%	0.39%	<b>1.19%</b>	
Solidum Cat Bond Fund, EUR - R class	<b>2024</b>	1.23%	1.16%	0.81%	0.23%	-0.34%	0.74%	1.12%	1.64%	1.87%	0.49%			<b>9.30%</b>
	<b>2023</b>	1.02%	1.03%	1.06%	0.92%	0.85%	1.24%	0.73%	1.22%	1.00%	1.08%	0.71%	0.77%	<b>12.27%</b>
	<b>2022</b>	0.27%	-0.12%	-0.33%	-0.39%	-0.14%	-0.40%	-0.04%	-0.32%	-6.87%	0.30%	1.20%	0.39%	<b>-6.49%</b>
	<b>2021</b>	0.45%	-0.92%	1.29%	0.54%	0.42%	0.62%	0.31%	-0.27%	0.11%	0.89%	0.49%	0.11%	<b>4.08%</b>
	<b>2020</b>	0.81%	-1.00%	-2.08%	0.17%	1.59%	0.73%	0.94%	1.04%	1.32%	0.58%	0.21%	0.21%	<b>4.54%</b>
	<b>2019</b>	0.42%	-0.05%	-0.75%	-0.01%	-0.89%	-0.03%	0.09%	-0.85%	2.91%	0.97%	-0.28%	0.39%	<b>1.88%</b>
	<b>2018</b>	1.35%	0.20%	-0.07%	0.24%	0.28%	0.60%	0.25%	0.44%	-0.02%	-0.67%	-1.01%	-0.25%	<b>1.33%</b>
	<b>2017</b>	0.22%	0.08%	0.00%	-0.19%	0.18%	0.16%	0.25%	0.21%	-7.20%	0.35%	0.53%	1.98%	<b>-3.66%</b>
	<b>2016</b>	-0.16%	1.18%	0.24%	0.19%	0.13%	0.20%	0.27%	0.42%	0.54%	0.28%	0.15%	0.04%	<b>3.54%</b>
	<b>2015</b>	0.22%	0.02%	0.01%	0.05%	-0.15%	-0.14%	0.10%	0.33%	0.51%	-0.87%	0.08%	0.09%	<b>0.26%</b>
	<b>2014</b>	0.25%	0.16%	0.15%	0.11%	-0.14%	0.07%	0.15%	0.46%	0.24%	0.39%	-0.01%	0.36%	<b>2.20%</b>
	<b>2013</b>	0.37%	0.60%	0.55%	0.29%	0.14%	-0.09%	0.10%	0.62%	0.71%	0.44%	0.24%	0.16%	<b>4.21%</b>
	<b>2012</b>	0.21%	-0.30%	0.12%	0.12%	0.46%	0.62%	0.15%	0.61%	0.74%	-0.22%	0.19%	0.68%	<b>3.43%</b>
	<b>2011</b>	0.41%	0.13%	-3.26%	0.26%	0.40%	0.50%	0.55%	0.24%	0.27%	0.76%	0.41%	0.15%	<b>0.78%</b>
<b>2010</b>	0.84%	1.29%	0.45%	0.38%	1.10%	-0.04%	0.34%	0.44%	1.42%	0.64%	0.25%	0.52%	<b>7.90%</b>	
<b>2009</b>										0.43%	0.54%	0.46%	<b>1.44%</b>	



## Historical performance (USD - R class)



Distribution of historical monthly returns (USD - R)



## Historical return analysis (USD - R class)

### Historical return characteristics

Current NAV per USD - R share	<b>1'862.86</b>
Return year-to-date	<b>10.88%</b>
Return last 12 months	<b>13.02%</b>
Return last 36 months, p.a.	<b>7.23%</b>
Return last 60 months, p.a.	<b>6.25%</b>
Return since inception, p.a.	<b>4.21%</b>
Return since inception (cumulative)	<b>86.29%</b>
Best month (since inception)	<b>3.11%</b>
Worst month (since inception)	<b>-7.44%</b>
Longest recovery period	<b>15 months</b>
Positive months (since inception)	<b>83%</b>

### Historic performance

	monthly	annualised
Average return	<b>0.35%</b>	<b>4.21%</b>
Standard Deviation	<b>0.99%</b>	<b>3.42%</b>
Sharpe Ratio (1m US Gov.)	<b>0.26</b>	<b>0.91</b>
Correlation analysis (monthly return data)		
S&P 500		<b>0.23</b>
NASDAQ Composite		<b>0.23</b>
Global Gov Bonds (hedged)		<b>0.18</b>
S&P 500 Inv. Grade Corp Bond Total Return		<b>0.24</b>
S&P 500 HY Corp Bond Total Return		<b>0.21</b>
HFRI FOF		<b>0.18</b>

## Manager comment

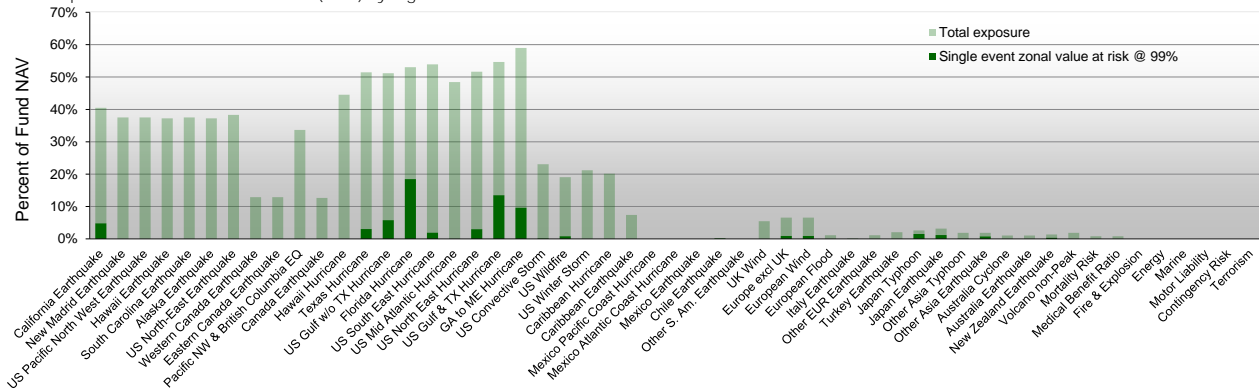
October was marked by a strong volatility in cat bond prices within the month, caused by Hurricane Milton's impact in Florida. Towards the end of the month, the market calmed down and the Fund was able to close out October with a positive performance in all currency classes.

Hurricane Milton developed very quickly in the Gulf of Mexico from a tropical disturbance to a Category 5 hurricane. However, it was also evident early on that the storm would weaken significantly before making landfall in Florida due to adverse atmospheric conditions. Officially, Milton then made landfall as a Category 3 storm, but reports of measured wind speeds showed that this strength was likely only reached very punctually. Thus, Milton turned out to be an event that bore some similarities to Hurricane Ian in 2022 in terms of its trajectory, but is likely to cause far less damage to the reinsurance industry due to its much lower strength. Capital losses on positions in the portfolio are therefore not expected. The increased volatility in the valuation of ILS securities observed towards the end of the month should calm down in the coming weeks.

At the end of October, issuance activity in the cat bond market picked up again after the typical pause during the active hurricane season. Various bonds with US and European exposure and with a total volume of over one billion US dollars were presented to investors. The coupons of the new issues confirmed the level of the market's current good spreads.

## Exposure information

Total exposure and annual value at risk (99%) by region and line of business



## Contact information

Asset Manager: Solidum Partners AG

Mühlebachstrasse 70, 8008 Zürich, Switzerland

Tel: +41 (0)43 521 21 80

Fax: +41 (0)43 521 21 89

contact@solidumpartners.ch

SOLIDUM PARTNERS AG IS AN ASSET MANAGER REGULATED AND SUPERVISED BY THE SWISS FINANCIAL MARKET AUTHORITY (FINMA) AND AS SUCH LICENCED TO CONDUCT ASSET MANAGEMENT SERVICES FOR COLLECTIVE INVESTMENT SCHEMES.

THE PRODUCTS AND SERVICES DESCRIBED HEREIN ARE NOT AVAILABLE NOR OFFERED TO US PERSONS AND WILL NOT BE PUBLICLY OFFERED TO PERSONS RESIDING IN A COUNTRY RESTRICTING THE OFFER OF SUCH PRODUCTS OR SERVICES. THIS MATERIAL HAS BEEN FURNISHED TO YOU SOLELY UPON REQUEST AND MAY NOT BE REPRODUCED OR OTHERWISE DISSEMINATED IN WHOLE OR PART WITHOUT PRIOR WRITTEN CONSENT FROM SOLIDUM PARTNERS AG. THE INFORMATION HEREIN MAY BE BASED ON ESTIMATES AND MAY IN NO EVENT BE RELIED UPON. CERTAIN STATEMENTS HEREIN ARE FORWARD-LOOKING AND READERS ARE CAUTIONED NOT TO PLACE UNDUE RELIANCE ON SUCH STATEMENTS. SOLIDUM PARTNERS AG DOES NOT ASSUME ANY LIABILITY WITH RESPECT TO INCORRECT OR INCOMPLETE INFORMATION (WHETHER RECEIVED FROM PUBLIC SOURCES OR WHETHER PREPARED BY ITSELF OR NOT).

THIS MATERIAL DOES NOT CONSTITUTE A PROSPECTUS, A REQUEST/OFFER, NOR A RECOMMENDATION OF ANY KIND, E.G. TO BUY/SUBSCRIBE OR SELL/REDEEM INVESTMENT INSTRUMENTS OR PERFORM SUCH TRANSACTIONS. THE INVESTMENT INSTRUMENTS MENTIONED HEREIN INVOLVE SIGNIFICANT RISK INCLUDING THE POSSIBLE LOSS OF THE AMOUNT INVESTED AS DESCRIBED IN DETAIL IN THE PROSPECTUS OF THESE INSTRUMENTS, WHICH IS AVAILABLE ON REQUEST. INVESTORS SHOULD UNDERSTAND THESE RISKS BEFORE REACHING ANY DECISION WITH RESPECT TO THESE INSTRUMENTS. PAST PERFORMANCE IS NO INDICATION OR GUARANTEE OF FUTURE PERFORMANCE.

THE PROSPECTUS AND THE KEY INVESTOR INFORMATION DOCUMENT (PRIIP) ARE AVAILABLE AT THE MANAGEMENT COMPANY: IFM INDEPENDENT FUND MANAGEMENT AG, LANDSTR. 30, FL-9494 SCHAAN OR FROM A LOCAL REPRESENTATIVE.

SWISS REPRESENTATIVE: RYEL & CIE S.A., RUE DU RHONE 4, CH-1204 GENEVA

SWISS PAYING AGENT: BANQUE CANTONALE DE GENEVE, 17 QUAI DE L'ILE, CH-1204 GENEVA

PAYING AND INFORMATION AGENT IN GERMANY: HAUCK & AUFGÄUSER PRIVATBANKIERS KGAA, KAISERSTR. 24, D-60311 FRANKFURT AM MAIN

PAYING AGENT AND FISCAL REPRESENTATIVE IN AUSTRIA: ERSTE BANK DER ÖSTERREICHISCHEN SPARKASSEN AG, AM BELVEDERE 1, A-1100 VIENNA