

Solidum Cat Bond Fund
R - classes
August 31, 2025

Fund objective

The Solidum Cat Bond Fund is an open-end fund registered in Liechtenstein as a UCITS pursuant to Liechtenstein law in the legal form of a trust (UCITS V). The Fund's objective is to achieve long term capital appreciation and low correlation to fixed income, equity and non-traditional investments. The Fund holds a diversified portfolio of catastrophe bonds or notes and other instruments transferring insurance event risk or genuine insurance underwriting risk. As the insurance event linked securities market evolves, new products may become available and the Fund may also invest in such products. The portfolio is actively managed in an attempt to achieve optimal returns in the context of the prevailing market environment.

In addition to its functional currency USD, the Fund offers CHF and EUR share classes. The equity capital of the CHF and EUR share classes is hedged to reduce effects of FX effects.

Key information

Fund name:	Solidum Cat Bond Fund	Share classes	
Strategy	Insurance linked securities	USD	Bloomberg
Focus	Catastrophe bonds		ISIN
Subscription	Semi-monthly		Reuters
Redemption	Semi-monthly		Telekurs
Redemption notice	10 days		Share class inception
Lockup	none		Current NAV USD class
Leverage	none		
Domicile	Liechtenstein	CHF	Bloomberg
Fund type	UCITS V		ISIN
Public distribution			Reuters
Management company	Independent Fund Management AG		Telekurs
Asset manager	Solidum Partners AG		Share class inception
Depository	Liechtensteinische Landesbank AG		Current NAV CHF class
Auditor	Ernst & Young		
Reporting	Monthly	EUR	Bloomberg
Financial year-end	December 31		ISIN
Distribution	Accumulating		Reuters
Fund inception	Sept 30, 2009		Telekurs
Minimum investment	CHF / EUR / USD 10'000		Share class inception
Management fee	1.00%		Current NAV EUR class
Performance fee	none		

Historical performance

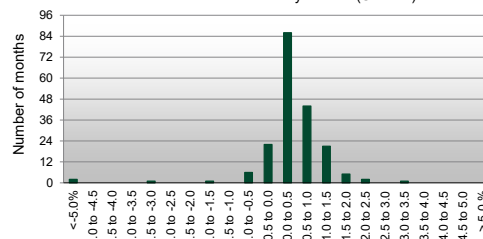
	Year	Jan	Feb	Mar	Apr	May	Jun	Jul	Aug	Sep	Oct	Nov	Dec	Year
Solidum Cat Bond Fund, USD - R class	2025	-0.22%	-0.05%	0.75%	0.11%	0.67%	0.79%	1.00%	1.49%					4.61%
	2024	1.33%	1.30%	0.99%	0.33%	-0.19%	0.90%	1.27%	1.84%	2.08%	0.56%	1.35%	1.72%	14.30%
	2023	1.29%	1.23%	1.31%	1.15%	0.92%	1.52%	0.90%	1.39%	1.19%	1.19%	0.90%	1.01%	14.94%
	2022	0.29%	-0.09%	-0.11%	-0.28%	0.00%	-0.40%	0.22%	-0.03%	-5.99%	0.38%	1.29%	0.78%	-4.07%
	2021	0.50%	-0.86%	1.40%	0.61%	0.53%	0.66%	0.40%	-0.21%	0.13%	0.81%	0.61%	0.25%	4.91%
	2020	1.01%	-0.83%	-1.78%	0.44%	0.31%	0.89%	0.91%	1.13%	1.46%	0.66%	0.31%	0.42%	5.02%
	2019	0.70%	0.21%	-0.48%	0.22%	-0.56%	0.23%	0.32%	-0.56%	3.11%	1.32%	-0.11%	0.64%	5.10%
	2018	1.55%	0.30%	0.21%	0.44%	0.44%	0.85%	0.48%	0.70%	0.18%	-0.43%	-0.74%	0.07%	4.13%
	2017	0.43%	0.18%	0.17%	-0.08%	0.34%	0.39%	0.41%	0.42%	-7.44%	0.55%	0.71%	2.45%	-1.78%
	2016	-0.08%	1.25%	0.37%	0.30%	0.23%	0.29%	0.27%	0.52%	0.67%	0.41%	0.21%	0.19%	4.72%
	2015	0.19%	0.03%	0.03%	0.08%	-0.08%	-0.07%	0.15%	0.37%	0.55%	-0.82%	0.10%	0.21%	0.72%
	2014	0.22%	0.18%	0.19%	0.11%	-0.15%	0.06%	0.16%	0.41%	0.22%	0.39%	0.00%	0.37%	2.17%
	2013	0.50%	0.58%	0.56%	0.35%	0.15%	-0.02%	0.14%	0.63%	0.71%	0.47%	0.26%	0.21%	4.64%
	2012	0.22%	-0.25%	0.13%	0.11%	0.42%	0.78%	0.20%	0.60%	0.80%	-0.17%	0.29%	0.69%	3.90%
	2011	0.51%	0.13%	-3.39%	0.19%	0.33%	0.49%	0.44%	0.24%	0.35%	0.74%	0.41%	0.19%	0.57%
	2010	0.75%	1.28%	0.43%	0.33%	0.96%	-0.01%	0.42%	0.44%	1.52%	0.70%	0.17%	0.45%	7.69%
	2009										0.43%	0.55%	0.40%	1.39%
Solidum Cat Bond Fund, CHF - R class	2025	-0.60%	-0.40%	0.39%	-0.26%	0.28%	0.39%	0.54%	1.13%					1.48%
	2024	1.04%	1.01%	0.68%	-0.01%	-0.57%	0.60%	0.84%	1.39%	1.68%	0.22%	1.08%	1.40%	9.76%
	2023	0.93%	0.95%	0.94%	0.81%	0.62%	1.09%	0.61%	1.01%	0.93%	0.88%	0.49%	0.58%	10.29%
	2022	0.29%	-0.11%	-0.27%	-0.40%	-0.13%	-0.28%	0.01%	-0.24%	-6.40%	0.11%	0.94%	0.16%	-6.33%
	2021	0.42%	-0.96%	1.38%	0.52%	0.41%	0.59%	0.30%	-0.29%	0.03%	0.79%	0.54%	0.08%	3.85%
	2020	0.78%	-1.00%	-2.12%	0.17%	1.23%	0.78%	0.74%	1.00%	1.36%	0.53%	0.17%	0.23%	3.90%
	2019	0.39%	-0.07%	-0.77%	-0.04%	-0.89%	-0.04%	0.01%	-0.84%	2.82%	0.91%	-0.31%	0.30%	1.42%
	2018	1.35%	0.16%	-0.08%	0.25%	0.20%	0.57%	0.21%	0.41%	-0.05%	-0.69%	-1.04%	-0.28%	0.97%
	2017	0.16%	0.04%	-0.05%	-0.23%	0.14%	0.13%	0.22%	0.21%	-7.59%	0.31%	0.54%	2.06%	-4.30%
	2016	-0.22%	1.18%	0.12%	0.16%	0.11%	0.15%	0.11%	0.41%	0.48%	0.21%	0.07%	-0.03%	2.77%
	2015	0.43%	-0.13%	-0.15%	-0.09%	-0.21%	-0.25%	-0.07%	0.28%	0.46%	-1.00%	-0.01%	-0.06%	-0.82%
	2014	0.22%	0.12%	0.14%	0.06%	-0.17%	-0.03%	0.14%	0.44%	0.20%	0.37%	-0.01%	0.43%	1.93%
	2013	0.34%	0.57%	0.57%	0.29%	0.12%	-0.07%	0.07%	0.58%	0.71%	0.43%	0.22%	0.13%	4.03%
	2012	0.17%	-0.31%	0.09%	0.04%	0.44%	0.68%	0.10%	0.50%	0.76%	-0.24%	0.12%	0.76%	3.16%
	2011	0.46%	0.10%	-3.34%	0.16%	0.32%	0.47%	0.40%	-0.02%	0.29%	0.67%	0.31%	0.15%	-0.09%
	2010	0.77%	1.26%	0.39%	0.35%	1.03%	-0.15%	0.31%	0.40%	1.42%	0.63%	0.16%	0.39%	7.18%
	2009										0.38%	0.41%	0.39%	1.19%
Solidum Cat Bond Fund, EUR - R class	2025	-0.36%	-0.19%	0.55%	-0.06%	0.46%	0.53%	0.76%	1.25%					2.97%
	2024	1.23%	1.16%	0.81%	0.23%	-0.34%	0.74%	1.12%	1.64%	1.87%	0.49%	1.31%	1.55%	12.45%
	2023	1.02%	1.03%	1.06%	0.92%	0.85%	1.24%	0.73%	1.22%	1.00%	1.08%	0.71%	0.77%	12.27%
	2022	0.27%	-0.12%	-0.33%	-0.39%	-0.14%	-0.40%	-0.04%	-0.32%	-6.87%	0.30%	1.20%	0.39%	-6.49%
	2021	0.45%	-0.92%	1.29%	0.54%	0.42%	0.62%	0.31%	-0.27%	0.11%	0.89%	0.49%	0.11%	4.08%
	2020	0.81%	-1.00%	-2.08%	0.17%	1.59%	0.73%	0.94%	1.04%	1.32%	0.58%	0.21%	0.21%	4.54%
	2019	0.42%	-0.05%	-0.75%	-0.01%	-0.89%	-0.03%	0.09%	-0.85%	2.91%	0.97%	-0.28%	0.39%	1.88%
	2018	1.35%	0.20%	-0.07%	0.24%	0.28%	0.60%	0.25%	0.44%	-0.02%	-0.67%	-1.01%	-0.25%	1.33%
	2017	0.22%	0.08%	0.00%	-0.19%	0.18%	0.16%	0.25%	0.21%	-7.20%	0.35%	0.53%	1.98%	-3.66%
	2016	-0.16%	1.18%	0.24%	0.19%	0.13%	0.20%	0.27%	0.42%	0.54%	0.28%	0.15%	0.04%	3.54%
	2015	0.22%	0.02%	0.01%	0.05%	-0.15%	-0.14%	0.10%	0.33%	0.51%	-0.87%	0.08%	0.09%	0.26%
	2014	0.25%	0.16%	0.15%	0.11%	-0.14%	0.07%	0.15%	0.46%	0.24%	0.39%	-0.01%	0.36%	2.20%
	2013	0.37%	0.60%	0.55%	0.29%	0.14%	-0.09%	0.10%	0.62%	0.71%	0.44%	0.24%	0.16%	4.21%
	2012	0.21%	-0.30%	0.12%	0.12%	0.46%	0.62%	0.15%	0.61%	0.74%	-0.22%	0.19%	0.68%	3.43%
	2011	0.41%	0.13%	-3.26%	0.26%	0.40%	0.50%	0.55%	0.24%	0.27%	0.76%	0.41%	0.15%	0.78%
	2010	0.84%	1.29%	0.45%	0.38%	1.10%	-0.04%	0.34%	0.44%	1.42%	0.64%	0.25%	0.52%	7.90%
	2009										0.43%	0.54%	0.46%	1.44%



Historical performance (USD - R class)



Distribution of historical monthly returns (USD - R)



Historical return analysis (USD - R class)

Historical return characteristics

Current NAV per USD - R share	2'008.94
Return year-to-date	4.61%
Return last 12 months	10.70%
Return last 36 months, p.a.	9.80%
Return last 60 months, p.a.	7.31%
Return since inception, p.a.	4.48%
Return since inception (cumulative)	100.89%
Best month (since inception)	3.11%
Worst month (since inception)	-7.44%
Longest recovery period	15 months
Positive months (since inception)	83%

Historic performance

	monthly	annualised
Average return	0.37%	4.48%
Standard Deviation	0.98%	3.38%
Sharpe Ratio (1m US Gov.)	0.27	0.95
Correlation analysis	(monthly return data)	
S&P 500		0.23
NASDAQ Composite		0.23
Global Gov Bonds (hedged)		0.16
S&P 500 Inv. Grade Corp Bond Total Return		0.22
S&P 500 HY Corp Bond Total Return		0.20
HFRI FOF		0.18

Manager comment

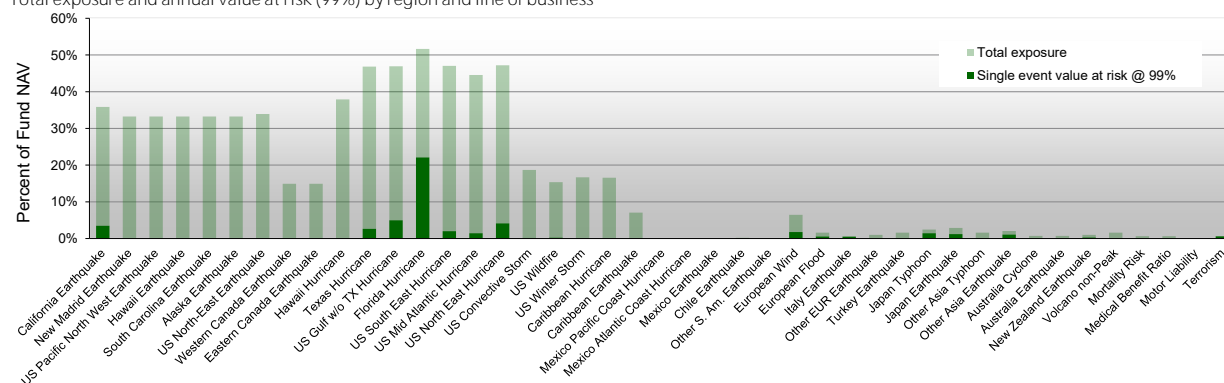
The fund achieved in the reporting month a very pleasing return of 1.13% to 1.49% in the three currency classes.

Since all reinsurance programs with coverage components for US hurricane risks have already been placed, issuance activity for catastrophe bonds was largely dormant, with only one exception. A wildfire protection transaction was completed for the "Los Angeles Department of Water & Power", a regional energy provider.

Global storm activity in (sub-)tropical regions has remained relatively moderate so far. Although Hurricane Erin, a Category 5 storm, formed in the mid-Atlantic, there was no significant activity in any basin that experienced a landfall event causing significant damage.

Exposure information

Total exposure and annual value at risk (99%) by region and line of business



Contact information

Asset Manager: Solidum Partners AG

Mühlebachstrasse 70, 8008 Zürich, Switzerland

Tel: +41 (0)43 521 21 80

Fax: +41 (0)43 521 21 89

contact@solidumpartners.ch

SOLIDUM PARTNERS AG IS AN ASSET MANAGER REGULATED AND SUPERVISED BY THE SWISS FINANCIAL MARKET AUTHORITY (FINMA) AND AS SUCH LICENCED TO CONDUCT ASSET MANAGEMENT SERVICES FOR COLLECTIVE INVESTMENT SCHEMES.

THE PRODUCTS AND SERVICES DESCRIBED HEREIN ARE NOT AVAILABLE NOR OFFERED TO US PERSONS AND WILL NOT BE PUBLICLY OFFERED TO PERSONS RESIDING IN A COUNTRY RESTRICTING THE OFFER OF SUCH PRODUCTS OR SERVICES. THIS MATERIAL HAS BEEN FURNISHED TO YOU SOLELY UPON REQUEST AND MAY NOT BE REPRODUCED OR OTHERWISE DISSEMINATED IN WHOLE OR PART WITHOUT PRIOR WRITTEN CONSENT FROM SOLIDUM PARTNERS AG. THE INFORMATION HEREIN MAY BE BASED ON ESTIMATES AND MAY IN NO EVENT BE RELIED UPON. CERTAIN STATEMENTS HEREIN ARE FORWARD-LOOKING AND READERS ARE CAUTIONED NOT TO PLACE UNDUE RELIANCE ON SUCH STATEMENTS. SOLIDUM PARTNERS AG DOES NOT ASSUME ANY LIABILITY WITH RESPECT TO INCORRECT OR INCOMPLETE INFORMATION (WHETHER RECEIVED FROM PUBLIC SOURCES OR WHETHER PREPARED BY ITSELF OR NOT).

THIS MATERIAL DOES NOT CONSTITUTE A PROSPECTUS, A REQUEST/OFFER, NOR A RECOMMENDATION OF ANY KIND, E.G. TO BUY/SUBSCRIBE OR SELL/REDEEM INVESTMENT INSTRUMENTS OR PERFORM SUCH TRANSACTIONS. THE INVESTMENT INSTRUMENTS MENTIONED HEREIN INVOLVE SIGNIFICANT RISK INCLUDING THE POSSIBLE LOSS OF THE AMOUNT INVESTED AS DESCRIBED IN DETAIL IN THE PROSPECTUS OF THESE INSTRUMENTS, WHICH IS AVAILABLE ON REQUEST. INVESTORS SHOULD UNDERSTAND THESE RISKS BEFORE REACHING ANY DECISION WITH RESPECT TO THESE INSTRUMENTS. PAST PERFORMANCE IS NO INDICATION OR GUARANTEE OF FUTURE PERFORMANCE.

THE PROSPECTUS AND THE KEY INVESTOR INFORMATION DOCUMENT (PRIIP) ARE AVAILABLE AT THE MANAGEMENT COMPANY: IFM INDEPENDENT FUND MANAGEMENT AG, LANDSTR. 30, FL-9494 SCHAAN OR FROM A LOCAL REPRESENTATIVE.

SWISS REPRESENTATIVE: RYEL & CIE S.A., RUE DU RHONE 4, CH-1204 GENEVA

SWISS PAYING AGENT: BANQUE CANTONALE DE GENEVE, 17 QUAI DE L'ILE, CH-1204 GENEVA

PAYING AND INFORMATION AGENT IN GERMANY: HAUCK & AUFGÄUSER PRIVATBANKIERS KGAA, KAISERSTR. 24, D-60311 FRANKFURT AM MAIN

PAYING AGENT AND FISCAL REPRESENTATIVE IN AUSTRIA: ERSTE BANK DER ÖSTERREICHISCHEN SPARKASSEN AG, AM BELVEDERE 1, A-1100 VIENNA